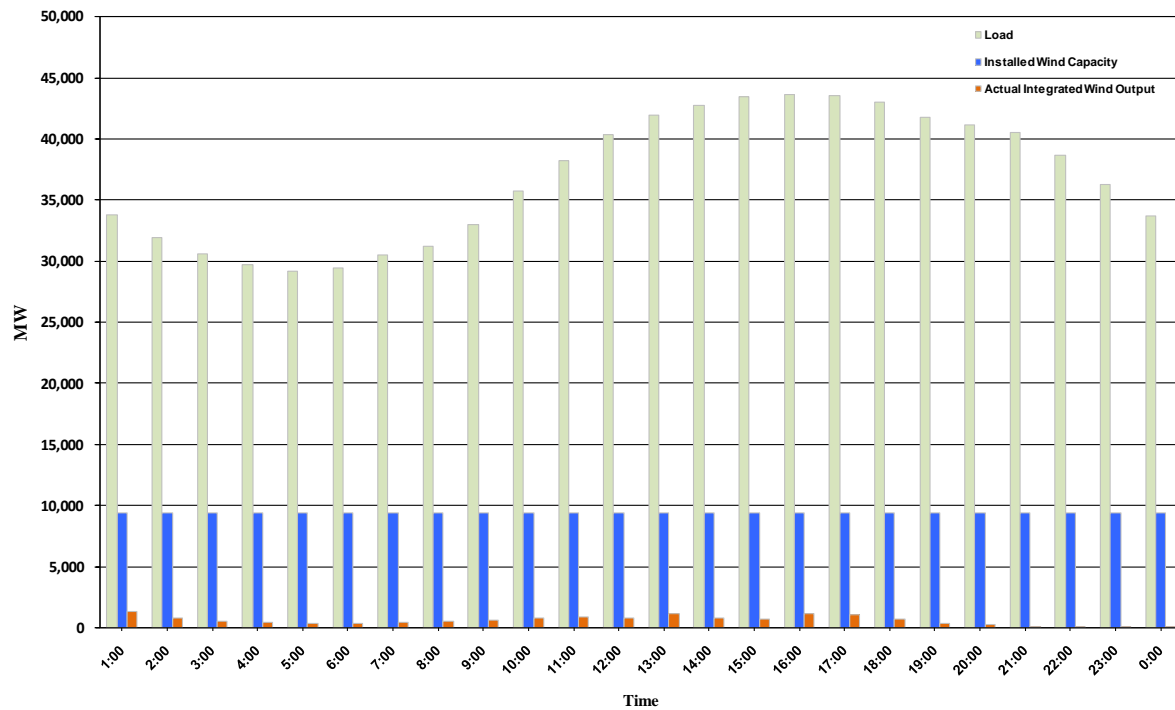




ERCOT Grid Operations Wind Penetration Report: 09/25/10

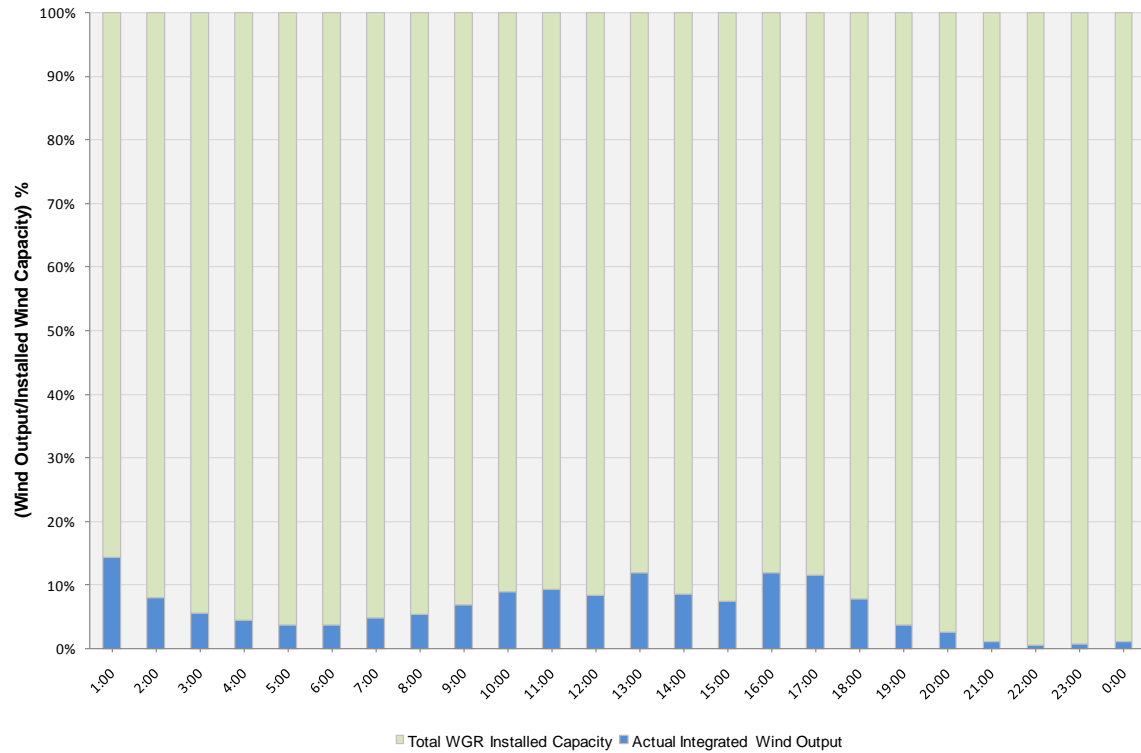
Peak Load	43,654 MW
Load Peak Hour	16
Wind Record 06/12/10	7016 MW
Max Wind value	1549 MW
Wind Peak Hour	00:41:44
Wind Penetration %	4.64

Hourly Average Actual Load vs. Actual Wind Output
09-25-2010

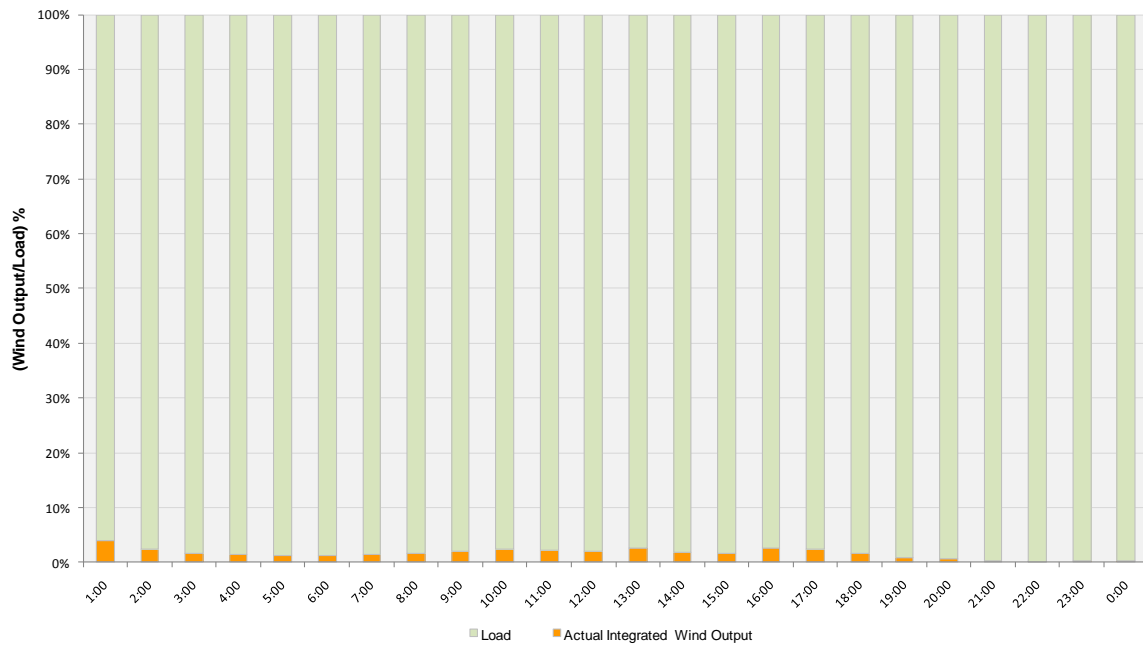




Actual Wind Output as a Percentage of the Total Installed Wind Capacity
09-25-2010



Actual Wind Output as a Percentage of the ERCOT Load
09-25-2010





ERCOT Load vs. Actual Wind Output 09/18/10 - 09/25/10

